

anti- AEG-1 antibody

Product Information

Catalog No.:	FNab10423
Size:	100µg
Form:	liquid
Purification:	Immunogen affinity purified
Purity:	≥95% as determined by SDS-PAGE
Host:	Rabbit
Clonality:	polyclonal
Clone ID:	None
IsoType:	IgG
Storage:	PBS with 0.02% sodium azide and 50% glycerol pH 7.3, -20°C for 12 months (Avoid repeated freeze / thaw cycles.)

Background

MTDH, also known as AEG-1, is a single-pass transmembrane protein with its gene located at chromosome 8q22, the abnormalities of which have been identified in several tumor types. MTDH is overexpressed in a number of malignancies, such as breast cancer, malignant glioma, and neuroblastoma, and its overexpression is associated with poor clinical outcome. MTDH plays an important role in the regulation of carcinogenesis and tumor progression. This antibody got two bands about 70 kDa and 80 kDa in western blotting, possibly due to posttranslational modification. This antibody is specific to AEG-1/MTDH.

Immunogen information

Immunogen:	metadherin
Synonyms:	3D3, 3D3/LYRIC, AEG 1, AEG1, LYRIC, LYRIC/3D3, metadherin, Metastasis adhesion protein, MTDH, Protein LYRIC
Observed MW:	64-80 kDa
Uniprot ID :	Q86UE4

Application

Wuhan Fine Biotech Co., Ltd.

B9 Bld, High-Tech Medical Devices Park, No. 818 Gaoxin Ave. East Lake High-Tech Development Zone. Wuhan, Hubei, China(430206)

Tel : (0086)027-87384275

Fax: (0086)027-87800889

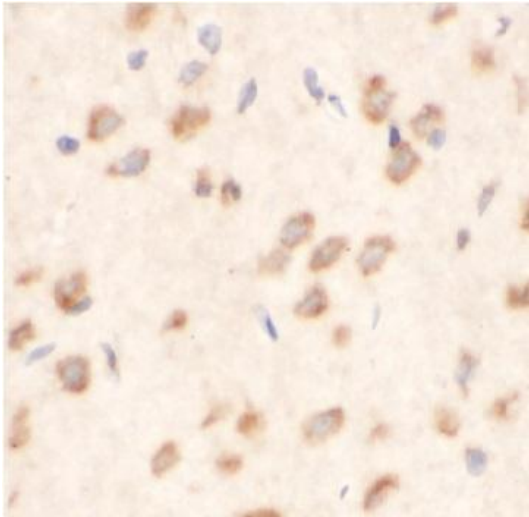
www.fn-test.com

Reactivity: Human, Mouse, Rat

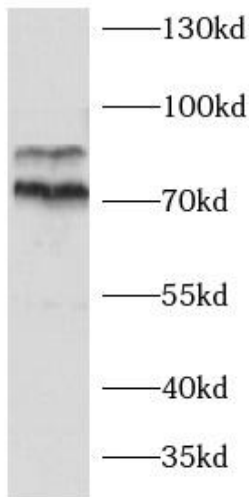
Tested Application: ELISA, WB, IHC

Recommended dilution: WB: 1:500 - 1:2000; IHC: 1:50 - 1:200

Image:



Immunohistochemistry of paraffin-embedded rat brain using FNab10423(AEG-1 antibody) at dilution of 1:200



MCF7 cells were subjected to SDS PAGE followed by western blot with FNab10423(AEG-1 antibody) at dilution of 1:1000