

anti- CAB39L antibody

Product Information

Catalog No.:	FNab10425
Size:	100µg
Form:	liquid
Purification:	Immunogen affinity purified
Purity:	≥95% as determined by SDS-PAGE
Host:	Rabbit
Clonality:	polyclonal
Clone ID:	None
IsoType:	IgG
Storage:	PBS with 0.02% sodium azide and 50% glycerol pH 7.3, -20°C for 12 months (Avoid repeated freeze / thaw cycles.)

Background

Component of a complex that binds and activates STK11/LKB1. In the complex, required to stabilize the interaction between CAB39/MO25(CAB39/MO25alpha or CAB39L/MO25beta) and STK11/LKB1(By similarity).

Immunogen information

Immunogen:	calcium binding protein 39-like
Synonyms:	Antigen MLAA 34, CAB39L, MO25 BETA, Mo25 like protein, MO2L, RP11 103J18.3
Observed MW:	40 kDa
Uniprot ID :	Q9H9S4

Application

Reactivity:	Human, Rat
Tested Application:	ELISA, WB, IHC
Recommended dilution:	WB: 1:500 - 1:2000; IHC: 1:50 - 1:200

Wuhan Fine Biotech Co., Ltd.

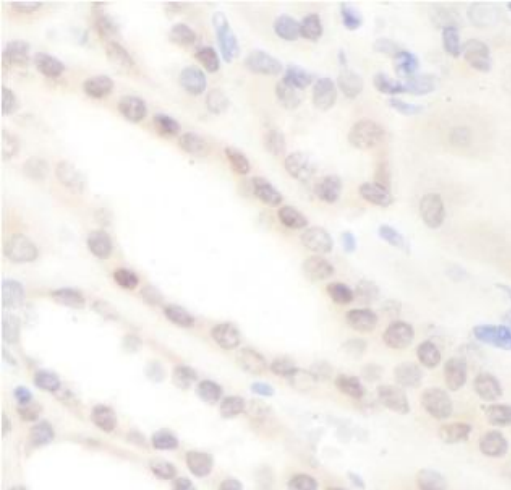
B9 Bld, High-Tech Medical Devices Park, No. 818 Gaoxin Ave. East Lake High-Tech Development Zone. Wuhan, Hubei, China(430206)

Tel : (0086)027-87384275

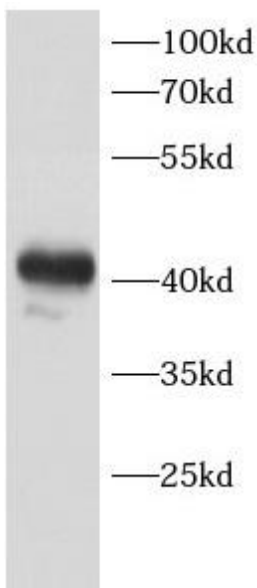
Fax: (0086)027-87800889

www.fn-test.com

Image:



Immunohistochemistry of paraffin-embedded human kidney using FNab10425(CAB39L antibody) at dilution of 1:100



rat kidney were subjected to SDS PAGE followed by western blot with FNab10425(CAB39L antibody) at dilution of 1:500

Wuhan Fine Biotech Co., Ltd.

B9 Bld, High-Tech Medical Devices Park, No. 818 Gaoxin Ave. East Lake High-Tech Development Zone. Wuhan, Hubei, China(430206)

Tel : (0086)027-87384275

Fax: (0086)027-87800889

www.fn-test.com