

anti- Cathepsin E antibody

Product Information

Catalog No.:	FNab10702
Size:	100µg
Form:	liquid
Purification:	Immunogen affinity purified
Purity:	≥95% as determined by SDS-PAGE
Host:	Rabbit
Clonality:	polyclonal
Clone ID:	None
IsoType:	IgG
Storage:	PBS with 0.02% sodium azide and 50% glycerol pH 7.3, -20°C for 12 months (Avoid repeated freeze / thaw cycles.)

Background

This gene encodes a member of the A1 family of peptidases. Alternative splicing of this gene results in multiple transcript variants. At least one of these variants encodes a preproprotein that is proteolytically processed to generate the mature enzyme. This enzyme, an aspartic endopeptidase, may be involved in antigen processing and the maturation of secretory proteins. Elevated expression of this gene has been observed in neurodegeneration.

Immunogen information

Immunogen:	Cathepsin E
Synonyms:	CTSE, CATE
Observed MW:	43 kDa
Uniprot ID :	P14091

Application

Reactivity:	Human, Mouse
Tested Application:	WB, IHC, IF
Recommended dilution:	WB: 1:500-1:2000; IHC: 1:50-1:200; IF: 1:50-1:200

1

Wuhan Fine Biotech Co., Ltd.

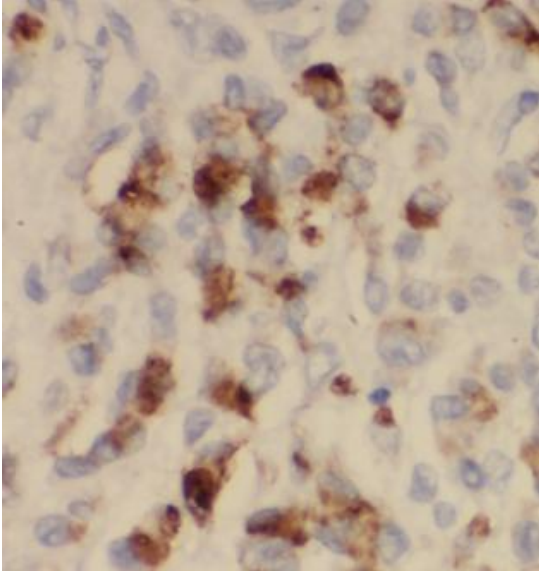
B9 Bld, High-Tech Medical Devices Park, No. 818 Gaoxin Ave. East Lake High-Tech Development Zone. Wuhan, Hubei, China(430206)

Tel : (0086)027-87384275

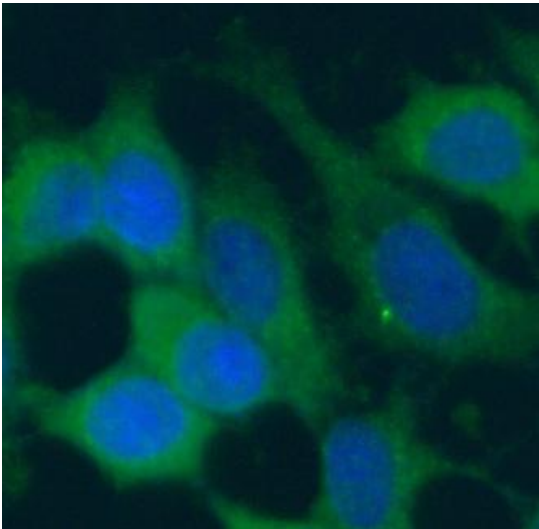
Fax: (0086)027-87800889

www.fn-test.com

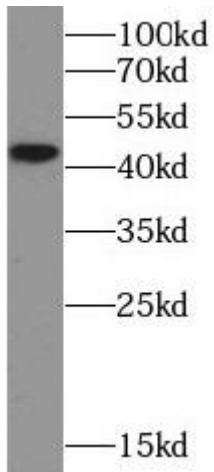
Image:



Immunohistochemistry of paraffin-embedded human gastric cancer using FNab10702(Cathepsin E antibody) at dilution of 1:100



Immunofluorescent analysis of MCF-7 cells using FNab10702(Cathepsin E antibody) at dilution of 1:100



Mouse spleen tissue were subjected to SDS PAGE followed by western blot with FNab10702(Cathepsin E antibody) at dilution of 1:1000