

anti- Aggrecan antibody

Product Information

Catalog No.:	FNab00213
Size:	100µg
Form:	liquid
Purification:	Immunogen affinity purified
Purity:	≥95% as determined by SDS-PAGE
Host:	Rabbit
Clonality:	polyclonal
Clone ID:	None
IsoType:	IgG
Storage:	PBS with 0.02% sodium azide and 50% glycerol pH 7.3, -20°C for 12 months (Avoid repeated freeze / thaw cycles.)

Background

Aggrecan(ACAN), also named as CSPCP, AGC1 and MSK16, belongs to the aggrecan/versican proteoglycan family(also including versican, brevican and neurocan). It is a major component of extracellular matrix of cartilagenous tissues. A major function of aggrecan is to resist compression in cartilage. It binds avidly to hyaluronic acid via an N-terminal globular region. This polyclonal antibody raised against 1-298aa of human aggrecan reveals a band of 70 kDa, which is consistent with the molecular weight of degradation product generated by proteolysis at the aggrecanase site(PMID: 7852317; 9337874).

Immunogen information

Immunogen:	aggrecan
Synonyms:	ACAN, AGC1, AGCAN, aggrecan, CSPG1, CSPGCP, MSK16, SEDK
Observed MW:	70 kDa
Uniprot ID :	P16112

Application

Reactivity:	Human, Mouse, Rat
-------------	-------------------

Wuhan Fine Biotech Co., Ltd.

B9 Bld, High-Tech Medical Devices Park, No. 818 Gaoxin Ave. East Lake High-Tech Development Zone. Wuhan, Hubei, China(430206)

Tel : (0086)027-87384275

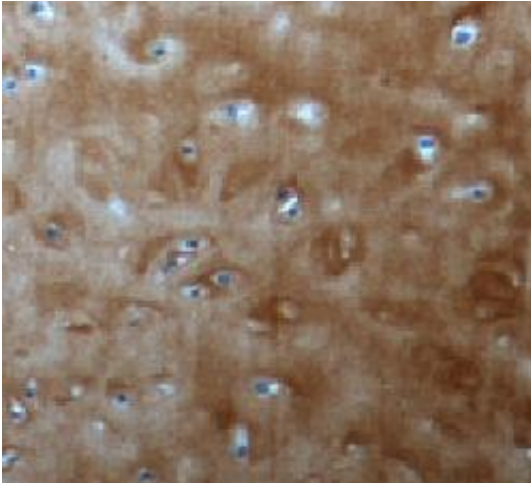
Fax: (0086)027-87800889

www.fn-test.com

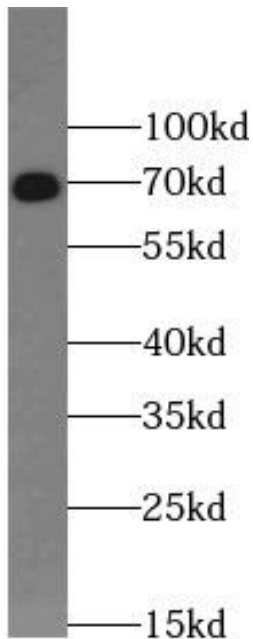
Tested Application: ELISA, WB, IHC

Recommended dilution: WB: 1:500-1:1000; IHC: 1:20-1:200

Image:



Immunohistochemistry of paraffin-embedded human cartilage tissue slide using FNab00213(ACAN Antibody) at dilution of 1:100



ROS1728 cells were subjected to SDS PAGE followed by western blot with FNab00213(ACAN Antibody) at dilution of 1:600

Wuhan Fine Biotech Co., Ltd.

B9 Bld, High-Tech Medical Devices Park, No. 818 Gaoxin Ave. East Lake High-Tech Development Zone. Wuhan, Hubei, China(430206)

Tel : (0086)027-87384275

Fax: (0086)027-87800889

www.fn-test.com