

Recombinant Human TOM1L2

Catalogue No.:	P6074
Synonyms:	FLJ32746, Srebf1, Target of Myb-like protein 2, Target of myb1 like 2, Target of myb1-like 2 (chicken), TM1L2_HUMAN, TOM1, TOM1-like 2, TOM1-like protein 2, TOM1L 2, Tom1l2
Species:	Human
Uniprot ID:	Q6ZVM7
Expression Region:	1-507
Source:	E.Coli
Tags:	His tag
Molecular Weight:	55.7 kDa
Purity:	Greater than 95% by SDS-PAGE gel analyses
Formulation:	Lyophilized from a 0.2um filtered solution in PBS with 5% trehalose, pH7.4
Reconstitution:	Sterile distilled water
Storage:	-20°C for 12 months as lyophilized; 2-8°C for 1 month under sterile conditions after reconstitution

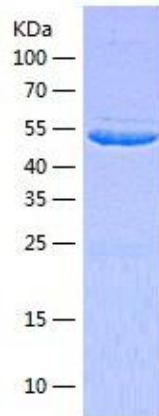
Wuhan Fine Biotech Co., Ltd.

B9 Bld, High-Tech Medical Devices Park, No. 818 Gaoxin Ave. East Lake High-Tech Development Zone. Wuhan, Hubei, China (430206)

Tel: (0086)027-87384275

Fax: (0086)027-87800889

www.fn-test.com

Image:**Safety note:**

This product is intended for research and manufacturing uses only. It is not a diagnostic device. Product degradation will result from multiple freeze/thaw cycles. It is suggested that the antigen be stored in use size aliquots and thawed just prior to use. This material has been inactivated, however as with all biological materials, it should be handled as potentially infectious. The user assumes all responsibility for care, custody and control of the material, including its disposal, in accordance with all regulations.

Wuhan Fine Biotech Co., Ltd.

B9 Bld, High-Tech Medical Devices Park, No. 818 Gaoxin Ave. East Lake High-Tech Development Zone. Wuhan, Hubei, China (430206)

Tel: (0086)027-87384275

Fax: (0086)027-87800889

www.fn-test.com