

Recombinant Human CK2A1

Catalogue No.:	P0325
Synonyms:	Casein Kinase 2 alpha, casein kinase 2, alpha 1 polypeptide, casein kinase II alpha 1 subunit, CK II alpha, CK2 catalytic subunit alpha, CK2A1, CK2A1casein kinase II subunit alpha, CKII, CSNK2A1, EC 2.7.11, EC 2.7.11.1, protein kinase CK2
Species:	Human
Uniprot ID:	P68400
Expression Region:	6-344
Source:	E.Coli
Tags:	IF2DI tag
Molecular Weight:	61 KDa
Purity:	Greater than 95% by SDS-PAGE gel analyses
Formulation:	Lyophilized from a 0.2um filtered solution in PBS with 5% trehalose, pH7.4
Reconstitution:	Sterile distilled water
Storage:	-20°C for 12 months as lyophilized; 2-8°C for 1 month under sterile conditions after reconstitution

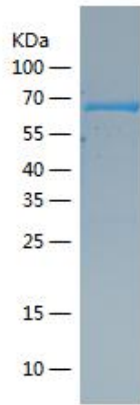
Wuhan Fine Biotech Co., Ltd.

B9 Bld, High-Tech Medical Devices Park, No. 818 Gaoxin Ave. East Lake High-Tech Development Zone. Wuhan, Hubei, China (430206)

Tel: (0086)027-87384275

Fax: (0086)027-87800889

www.fn-test.com

Image:**Safety note:**

This product is intended for research and manufacturing uses only. It is not a diagnostic device. Product degradation will result from multiple freeze/thaw cycles. It is suggested that the antigen be stored in use size aliquots and thawed just prior to use. This material has been inactivated, however as with all biological materials, it should be handled as potentially infectious. The user assumes all responsibility for care, custody and control of the material, including its disposal, in accordance with all regulations.

Wuhan Fine Biotech Co., Ltd.

B9 Bld, High-Tech Medical Devices Park, No. 818 Gaoxin Ave. East Lake High-Tech Development Zone. Wuhan, Hubei, China (430206)

Tel: (0086)027-87384275

Fax: (0086)027-87800889

www.fn-test.com