

Recombinant Human ATP5F1A

Catalogue No.:	P0550
Synonyms:	ATP synthase alpha chain,ATP synthase alpha chain, mitochondrial,ATP synthase subunit alpha,ATP synthase subunit alpha mitochondrial,ATP synthase, H+ transporting, mitochondrial F1 complex, alpha subunit 1, cardiac muscle,ATP synthase, H+ transporting, mitochondrial F1 complex, alpha subunit, 1ATP5A,Atp5a1,ATP5AL2,ATPA_HUMAN,ATPM Epididymis secretory sperm binding protein Li 123m,
Species:	Human
Uniprot ID:	P25705
Expression Region:	186-343
Source:	E.Coli
Tags:	IF2DI tag
Molecular Weight:	38 KDa
Purity:	Greater than 95% by SDS-PAGE gel analyses
Formulation:	Lyophilized from a 0.2um filtered solution in PBS with 5% trehalose, pH7.4
Reconstitution:	Sterile distilled water
Storage:	-20°C for 12 months as lyophilized; 2-8°C for 1 month under sterile conditions after reconstitution

Wuhan Fine Biotech Co., Ltd.

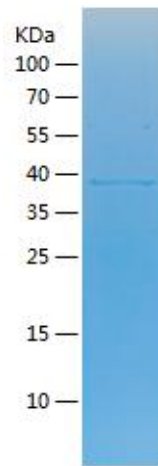
B9 Bld, High-Tech Medical Devices Park, No. 818 Gaoxin Ave.East Lake High-Tech Development Zone.Wuhan, Hubei, China (430206)

Tel: (0086)027-87384275

Fax: (0086)027-87800889

www.fn-test.com

Image:



Safety note:

This product is intended for research and manufacturing uses only. It is not a diagnostic device. Product degradation will result from multiple freeze/thaw cycles. It is suggested that the antigen be stored in use size aliquots and thawed just prior to use. This material has been inactivated, however as with all biological materials, it should be handled as potentially infectious. The user assumes all responsibility for care, custody and control of the material, including its disposal, in accordance with all regulations.

Wuhan Fine Biotech Co., Ltd.

B9 Bld, High-Tech Medical Devices Park, No. 818 Gaoxin Ave. East Lake High-Tech Development Zone. Wuhan, Hubei, China (430206)

Tel: (0086)027-87384275

Fax: (0086)027-87800889

www.fn-test.com