

Recombinant Human FGFR1

| | |
|---------------------------|--|
| Catalogue No.: | P0584 |
| Synonyms: | basic fibroblast growth factor receptor 1, BFGFR, bFGF-R-1, CD331 antigen, CD331, CEK, EC 2.7.10, EC 2.7.10.1, FGF R1, FGFB, FGFR1, FGFR-1, fibroblast growth factor receptor 1, FLGH3, FLJ99988, Flt-2, FLT2H4, Fms-like tyrosine kinase 2, fms-related tyrosine kinase 2, H2, H5, HBGFR, heparin-binding growth factor receptor, hydroxyaryl-protein kinase, KAL 2, KAL2, N-SAM, OGD, Proto-oncogene c-Fgr, soluble FGFR1 variant 1, soluble FGFR1 variant 2 |
| Species: | Human |
| Uniprot ID: | P11362 |
| Expression Region: | 624-822 |
| Source: | E.Coli |
| Tags: | IF2DI tag |
| Molecular Weight: | 43.4 KDa |
| Purity: | Greater than 95% by SDS-PAGE gel analyses |
| Formulation: | Lyophilized from a 0.2um filtered solution in PBS with 5% trehalose, pH7.4 |
| Reconstitution: | Sterile distilled water |
| Storage: | -20°C for 12 months as lyophilized; 2-8°C for 1 month under sterile conditions after reconstitution |

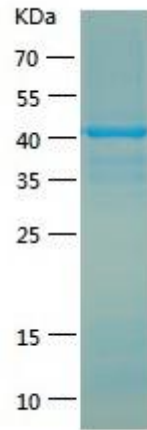
Wuhan Fine Biotech Co., Ltd.

B9 Bld, High-Tech Medical Devices Park, No. 818 Gaoxin Ave. East Lake High-Tech Development Zone. Wuhan, Hubei, China (430206)

Tel: (0086)027-87384275

Fax: (0086)027-87800889

www.fn-test.com

Image:**Safety note:**

This product is intended for research and manufacturing uses only. It is not a diagnostic device. Product degradation will result from multiple freeze/thaw cycles. It is suggested that the antigen be stored in use size aliquots and thawed just prior to use. This material has been inactivated, however as with all biological materials, it should be handled as potentially infectious. The user assumes all responsibility for care, custody and control of the material, including its disposal, in accordance with all regulations.

Wuhan Fine Biotech Co., Ltd.

B9 Bld, High-Tech Medical Devices Park, No. 818 Gaoxin Ave. East Lake High-Tech Development Zone. Wuhan, Hubei, China (430206)

Tel: (0086)027-87384275

Fax: (0086)027-87800889

www.fn-test.com