

Recombinant Human MAGEA1

Catalogue No.:	P1285
Synonyms:	Antigen MZ2 E, Antigen MZ2-E, Cancer/testis antigen 1.1, cancer/testis antigen family 1, member 1, CT1.1, MAGA1_HUMAN, MAGE 1 antigen, MAGE-1 antigen, MAGE1, MAGE1A, MAGEA1, Melanoma antigen 1, Melanoma antigen family A 1, Melanoma antigen family A 1 (directs expression of antigen MZ2 E)
Species:	Human
Uniprot ID:	P43355
Expression Region:	161-309
Host:	E.Coli
Tags:	N-terminal His-IF2DI Tag
Molecular Weight:	37.6 KDa
Purity:	Greater than 95% by SDS-PAGE gel analyses
Formulation:	Lyophilized from a 0.2 μ m filtered solution in 10 mM Hepes, 500 mM NaCl with 5% trehalose and 0.06% proclin, pH7.4
Reconstitution:	Centrifuge the vial at 10,000 rpm for 1 minute, reconstitute at 200 μ g/ml in sterile distilled water
Storage:	-20°C for 12 months as lyophilized; 2-8°C for 1 month under sterile conditions after reconstitution

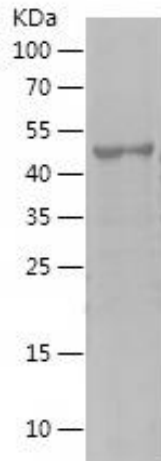
Wuhan Fine Biotech Co., Ltd.

B9 Bld, High-Tech Medical Devices Park, No. 818 Gaoxin Ave. East Lake High-Tech Development Zone. Wuhan, Hubei, China (430206)

Tel: (0086)027-87384275

Fax: (0086)027-87800889

www.fn-test.com

Image:**Safety note:**

This product is intended for research and manufacturing uses only. It is not a diagnostic device. Product degradation will result from multiple freeze/thaw cycles. It is suggested that the antigen be stored in use size aliquots and thawed just prior to use. This material has been inactivated, however as with all biological materials, it should be handled as potentially infectious. The user assumes all responsibility for care, custody and control of the material, including its disposal, in accordance with all regulations.

Wuhan Fine Biotech Co., Ltd.

B9 Bld, High-Tech Medical Devices Park, No. 818 Gaoxin Ave. East Lake High-Tech Development Zone. Wuhan, Hubei, China (430206)

Tel: (0086)027-87384275

Fax: (0086)027-87800889

www.fn-test.com