

## Recombinant Human ALDH3A1

<b>Catalogue No.:</b>	P2485
<b>Species:</b>	Human
<b>Uniprot ID:</b>	P30838
<b>Expression Region:</b>	254-453
<b>Host:</b>	E.Coli
<b>Tags:</b>	N-terminal His-IF2DI Tag
<b>Molecular Weight:</b>	42.8 kDa
<b>Purity:</b>	Greater than 90% by SDS-PAGE gel analyses
<b>Formulation:</b>	Lyophilized from a 0.2µm filtered solution in PBS with 5% trehalose, pH7.4
<b>Reconstitution:</b>	Centrifuge the vial at 10,000 rpm for 1 minute, reconstitute at 200 µg/ml in sterile distilled water by gentle pipetting 2–3 times, don't vortex
<b>Storage:</b>	-20°C for 12 months as lyophilized; 2-8°C for 1 month under sterile conditions after reconstitution
<b>Synonyms:</b>	Acetaldehyde dehydrogenase 3, AHD 4, AHD C, AHD4, AHDC, AL3A1_HUMAN, Aldehyde dehydrogenase, Aldehyde dehydrogenase 3, Aldehyde dehydrogenase 3 family member A1, Aldehyde dehydrogenase 3A1, Aldehyde dehydrogenase class 3, Aldehyde dehydrogenase dimeric NADP preferring

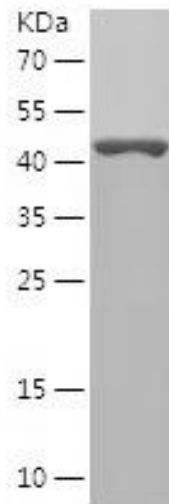
### Wuhan Fine Biotech Co., Ltd.

B9 Bld, High-Tech Medical Devices Park, No. 818 Gaoxin Ave. East Lake High-Tech Development Zone. Wuhan, Hubei, China (430206)

Tel: (0086)027-87384275

Fax: (0086)027-87800889

[www.fn-test.com](http://www.fn-test.com)

**Image:****Safety note:**

This product is intended for research and manufacturing uses only. It is not a diagnostic device. Product degradation will result from multiple freeze/thaw cycles. It is suggested that the antigen be stored in use size aliquots and thawed just prior to use. This material has been inactivated, however as with all biological materials, it should be handled as potentially infectious. The user assumes all responsibility for care, custody and control of the material, including its disposal, in accordance with all regulations.

**Wuhan Fine Biotech Co., Ltd.**

B9 Bld, High-Tech Medical Devices Park, No. 818 Gaoxin Ave. East Lake High-Tech Development Zone. Wuhan, Hubei, China (430206)

Tel: (0086)027-87384275

Fax: (0086)027-87800889

[www.fn-test.com](http://www.fn-test.com)