

anti- Phospho-Tau-T181 antibody

Product Information

| | |
|---------------|---|
| Catalog No.: | FNab10900 |
| Size: | 100µg |
| Form: | liquid |
| Purification: | Immunogen affinity purified |
| Purity: | ≥95% as determined by SDS-PAGE |
| Host: | Rabbit |
| Clonality: | polyclonal |
| IsoType: | IgG |
| Storage: | PBS with 0.02% sodium azide and 50% glycerol pH 7.3, -20°C for 12 months (Avoid repeated freeze / thaw cycles.) |

Immunogen information

| | |
|--------------|--|
| Immunogen: | A phospho specific peptide corresponding to residues surrounding T181 of human tau |
| Synonyms: | DDPAC, FTDP-17, MAPTL, MSTD, MTBT1, MTBT2, PPND, PPP1R103, TAU, MAPT, Tau |
| Observed MW: | 50 kDa |
| Uniprot ID : | P10636 |

Application

| | |
|--------------------------|-------------------|
| Reactivity: | Human, Mouse, Rat |
| Tested Application: | ELISA, WB |
| Recommended dilution:WB: | 1:500-1:2000 |
| Image: | |

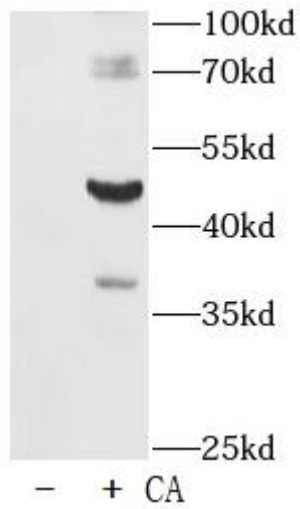
Wuhan Fine Biotech Co., Ltd.

B9 Bld, High-Tech Medical Devices Park, No. 818 Gaoxin Ave. East Lake High-Tech Development Zone. Wuhan, Hubei, China(430206)

Tel : (0086)027-87384275

Fax: (0086)027-87800889

www.fn-test.com



HeLa lysates were subjected to SDS PAGE followed by western blot with Phospho-Tau-T181 antibody at 1:1000. HeLa cells were treated by Calyculin A (100 nM) for 30 minutes after serum-starvation overnight.